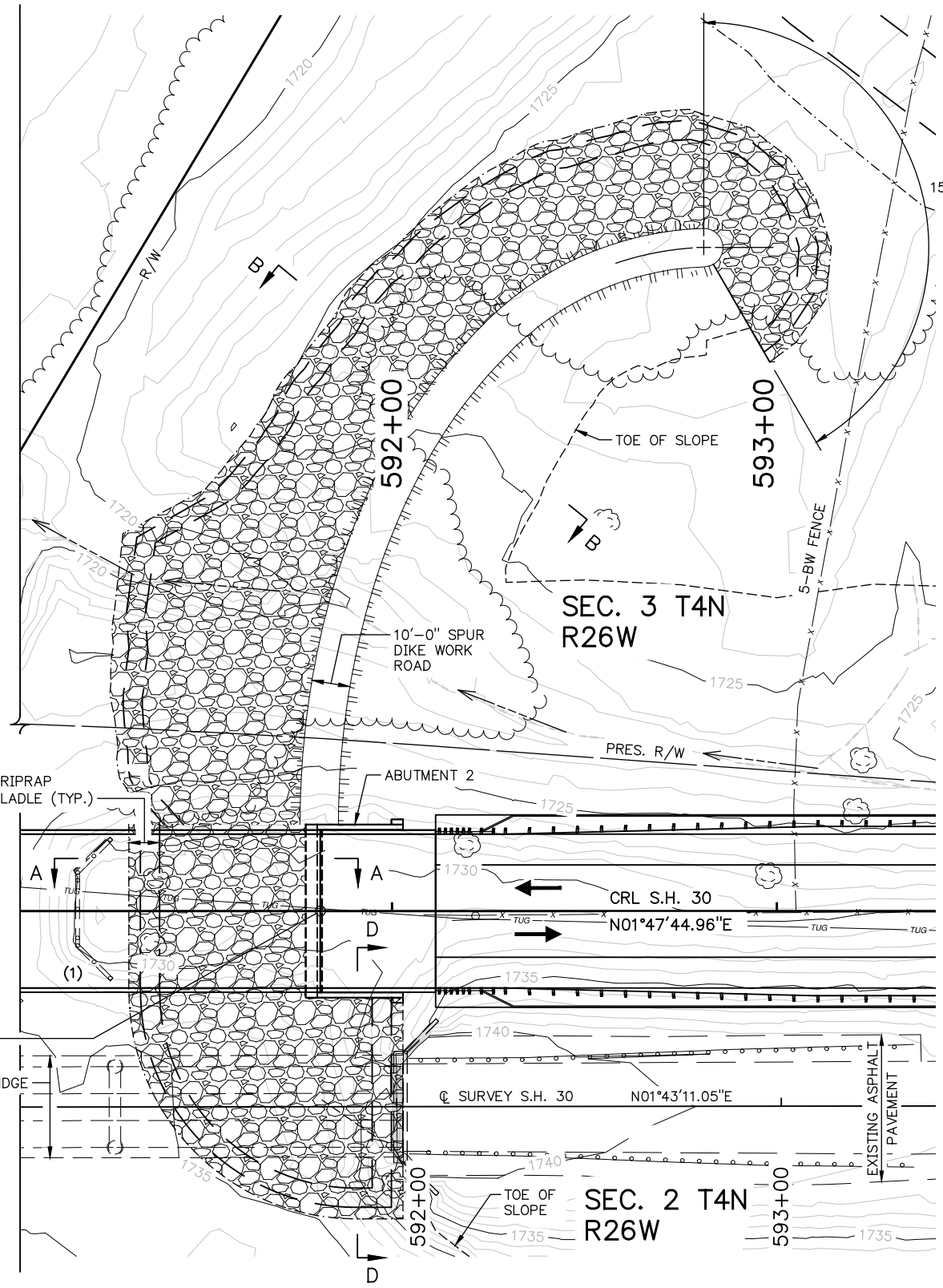


RIPRAP PLAN AT ABUTMENT 1

| RIPRAP QUANTITIES | | |
|-------------------------|-------|----------|
| ITEM | UNITS | TOTAL |
| TYPE I-A PLAIN RIPRAP | TON | 3,590.00 |
| TYPE I-A FILTER BLANKET | TON | 680.00 |

SCALE: 1"=20'



RIPRAP PLAN AT ABUTMENT 2

LEGEND



24" TYPE I-A PLAIN RIPRAP AND 6" TYPE I-A FILTER BLANKET

- (1) APPROX. LOCATION OF 1933/1936 BRIDGE SUBSTRUCTURE UNIT. SEE GENERAL PLAN AND ELEVATION SHEETS AND "OBSTRUCTIONS" NOTE, SHEET NO. 6.

NOTES:

ALL STATIONING FOLLOWS CRL S.H. 30, UNLESS NOTED OTHERWISE.

FOR RIPRAP SECTIONS, SEE SHEET NO. 34.

THIS SHEET PERTAINS TO THE CONSTRUCTION OF THE RIPRAP ONLY. REFER TO ROADWAY PLANS FOR THE CONSTRUCTION OF THE SPUR DIKES AND THE ASSOCIATED EARTHWORK QUANTITIES.

ROADWAY EARTHWORK QUANTITIES INCLUDE THE EXCAVATION REQUIRED FOR THE RIPRAP LADLES ALONG THE SPUR DIKES. ANY OTHER EXCAVATIONS REQUIRED FOR THE PLACEMENT OF RIPRAP, NOT INCLUDED IN THE ROADWAY QUANTITIES, SHALL BE CONSIDERED INCIDENTAL TO THE PRICE BID FOR "TYPE I-A PLAIN RIPRAP".

SEE ROADWAY PLANS FOR PRESENT AND NEW R/W, WHERE NOT SHOWN.

RIPRAP DETAILS

(SHEET 1 OF 2)
BRIDGE "A" C.R.L. STA. 586+80.46